



CabParts

Your Custom Cabinet Factory

Custom Closet Components

2025 CATALOG

3 INTRODUCTION

4 TERMS & CONDITIONS

5 GENERAL INFORMATION

6 STOCK CLOSET MATERIALS

7 CLOSET MODULES

Contact CabParts®

716 Arrowest Road
Grand Junction, CO 81505
970.241.7682

cabparts@cabparts.com

Since 1987, CabParts® has been proudly serving building trade customers - including cabinet shops, residential and commercial builders and remodelers, architects, designers, and other cabinet related manufacturers. CabParts® is a second-generation family-owned business located in Grand Junction, Colorado.

CabParts® manufactures full-access, European style, cabinet boxes - together with drawers, doors, drawer fronts and closet systems - all to your specifications. All components are shipped flat-packed and arrive with each piece clearly labeled and ready for quick and efficient assembly.

We can also supply functional hardware, dovetailed drawer boxes and wood 5-piece doors and drawer fronts.

To become a CabParts customer and/or place your first order, please go to <https://cabparts.com/online>



DIMENSIONS TO FIT YOUR SPECIFICATIONS - Custom or standard sizing, components are built for each order and delivered ready for quick & easy assembly.



FLEXIBLE TO YOUR DESIGN - All components are configured to your specific requirements. Standard item or custom design? 32mm or custom boring patterns? Whatever specifications you need, we can provide.



RESIDENTIAL OR COMMERCIAL - Exceed your customer's expectations with casework that is at home in any building, wherever you need them – from homes to hospitals to schools to offices; whether new, remodel, or repair.



GREAT FREIGHT RATES - We are proud to call Grand Junction Colorado home, and if that sounds far away that's because it probably is. Because of our semi-remote location, we have a lot of shipping to us but not a whole lot of shipping out. This is great for our customers because we get low freight rates allowing you to keep your costs down.

Terms and Conditions

Please note, you must be a building trade-related professional to order from CabParts®.

Verification of your trade relation, business and tax status will be required in order to establish a new account with us. We sell wholesale, not retail, business-to-business. If you are a homeowner, please have your building trade professional contact us to arrange purchasing through CabParts®.

ORDERS AND QUOTES

- Orders will be placed in line for production upon receipt of your Order Confirmation and an initial 50% or complete payment.
- CabParts® makes every reasonable effort to ship on, or before, the projected ship date shown in your Order Confirmation. However, the actual date may vary.
- Quotes do not receive a projected ship date and are not entered into production. Quotes are valid for only 30 days from the date of submittal.
- CabParts® cannot take phone orders.

PAYMENT

- CabParts® requires a minimum 50% deposit due at approval for production. Any balance is due prior to shipping. CabParts® encourages payment of 100% at time of approval to avoid shipping delays.
- Payment may be made by company check, cashier's check, or credit/debit card through our Merchant One payment portal. We accept Visa, MasterCard, Discover, and American Express.
- Delay of the deposit will affect production timing and may affect shipping date.

RETURNS

- Authorization must be obtained from CabParts® within 10 business days of delivery. for the return of any CabParts® product, including hardware.
- Any parts made to order or made with special order material are not returnable unless defective.
- All returns, unless for defects, are subject to a restock fee and the customer must pay return shipping costs

SHIPPING

- Orders are shipped freight pre-paid via common carrier, ground package or may be "Will Call" at the factory. Customers may arrange their own shipping, or request "Freight Charges COD."
- Hard siding of pallets, for increased protection, is available for an additional charge and additional pallets, if requested by the customer, will be assessed a fee-per pallet.
- A Packaging & Handling Fee may be charged based on unusual packaging - for example, a small Order required to go LTL (on a pallet) vs. ground package. Freight companies may add charges for shipping tubes or pallets 93" or longer.
- All Orders are F.O.B. Grand Junction, Colorado.

WARRANTY

- CabParts® warrants the components it manufactures to be free from defects in material and workmanship, to be machined to correct size and with the correct milling to accomplish easy and accurate assembly. CabParts® makes no further warranty either expressed or implied.
- Since assembly and installation are not done by CabParts® and are beyond our control, CabParts® makes no warranties in regard to assembly or installation.

DISCLAIMER

- CabParts® will not be responsible for any expenses incurred by the customer due to unexpected delays in factory production, delivery, jobsite installation, assembly time due to incorrect parts or delay for replacement (warranty) parts, freight damage replacement parts, natural or manmade disaster or any other situation not listed here.
- CabParts® reserves the right to change pricing and/or specifications at any time.

General Information for Closets

CLOSET COMPONENTS are Made-To-Order (MTO) and the customer specifies the closet module type and configuration, including dimensions, case materials and hardware.

AVAILABLE CLOSET MATERIALS INCLUDE:

Stocked:

- White
- Almond
- Black
- Gray
- Natural Maple
- Prefinished Maple C-2 Ply
- White Veneer Core Ply
- Egger Feelwood Natural Halifax Oak H1180

Roucke TFL:

- Silver Frost
- Slate TFL

TFL:

- Alabama Cherry

Roucke HD Textured:

- Aspen
- Durango
- Weathered Oak
- Slate HD

Roucke Ultramatte:

- Pure White 11082 (G2S)
- Grey 85384 (G2S)

CASE EDGEBANDING is to match the material selected, with laser/hot air if available.

CLOSET ASSEMBLY: Module components are assembled with Rafx-style cam fittings.

ATTACHMENT TO THE WALL is by user selected rabbeted cleats (with dowels) or suspension rail and hangers.

STANDARD DRAWER BOXES are 5/8" thick melamine with 1/4" or 5/8" thick bottoms.

AVAILABLE MATERIALS INCLUDE:

- White
- Almond
- Black
- Gray
- Natural Maple
- Birch plywood
- SALT Anthracite linen
- SALT Buff Linen
- SALT Maholia Linen

DOVETAILED DRAWER BOXES ARE AVAILABLE and are made from birch plywood or solid beech or maple wood.

Melamine drawer boxes wider than 34-1/8" will have thicker melamine bottoms, rabbeted-in for strength, depending on material chosen. Dovetailed drawer boxes wider than 34" will have a center bottom rail added for support.

DRAWER SLIDES are user's choice of Pro 100 standard or Pro 100 soft-close, side mount ballbearing slides; or Blum Tandem soft-close undermount slides.

DRAWER ASSEMBLY is user choice of Conformat steel screw with guide dowels or standard dowel and glue.

HARDWARE: Choices of hardware type and finish are included wherever applicable. Using functional hardware from CabParts® stock hardware will guarantee that it will fit and function in your CabParts® closet.

CABPARTS® IS NOT A RETAILER - WE SELL TO QUALIFIED TRADES, WHOLESALE ONLY.

FOR NON-TRADE SALES PLEASE TALK TO YOUR BUILDING PROFESSIONAL IF YOU WISH TO USE CABPARTS®.

Stock Closet Materials



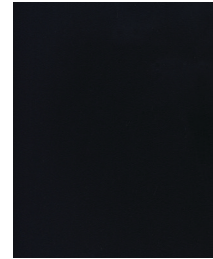
Alabama Cherry



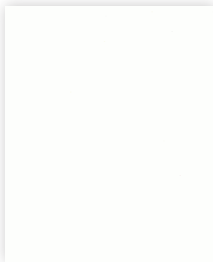
Almond



Aspen



Black



White Veneer
Core Ply



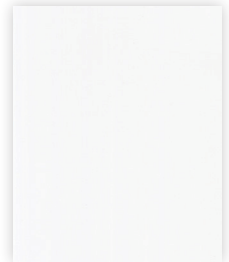
Durango HD



Folkstone Grey



Prefinished Maple
C-2 ply



Grey UM



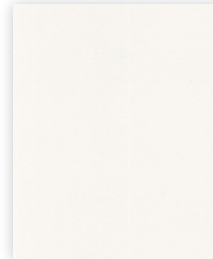
Natural Maple



Egger Feelwood
Halifax Oak



Pure White UM



White



Silver Frost



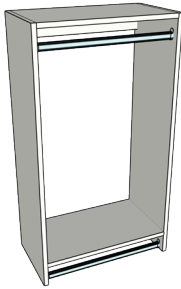
Slate HD



Slate

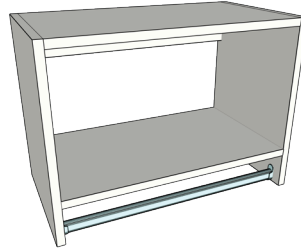


Weathered
Oak HD



DOUBLE HANG

A section with 2 hang rods for hanging short items like pants and shirts - 46"h



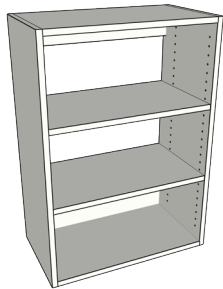
LONG HANG

A section with hang rod for long hanging items like dresses - 18"h



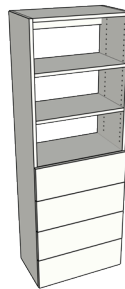
MEDIUM HANG

A section with hang rod for medium length hanging items with adjustable shelves or Shoe Shelves - 36"h



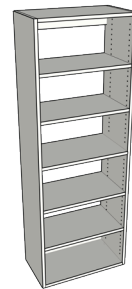
SHORT SHELVES

A short section with adjustable shelves or adjustable shoe shelves - 36"h



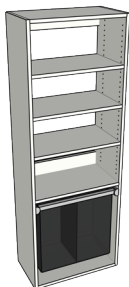
TALL 4 DRAWER

A tall section with adjustable regular or shoe shelves and four drawers - 71"h



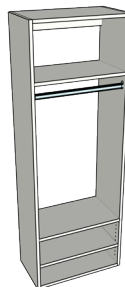
TALL SHELVES

A tall section with adjustable regular or shoe shelves - 71"h



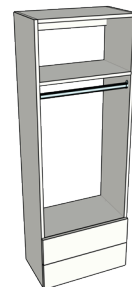
TALL SHELVES - HAMPER

Tall section with adjustable regular or shoe shelves, choice of hamper - 71"h



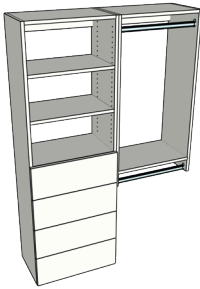
TALL SPLIT HANG

A section with hang rod in the middle for medium length hanging items and adjustable shelf - 71"h



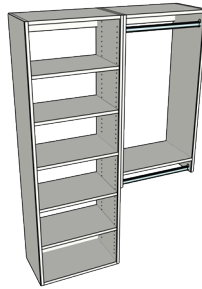
TALL SPLIT HANG - DRAWERS

A section with hang rod in the middle for medium length hanging items and 2 drawers - 71"h



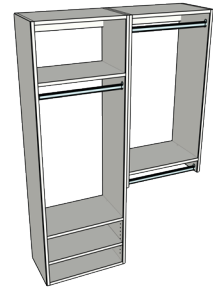
TYPICAL 2 SECTION CHOICE

24 - 72" wide two section kit with drawers, shelving and hanging space



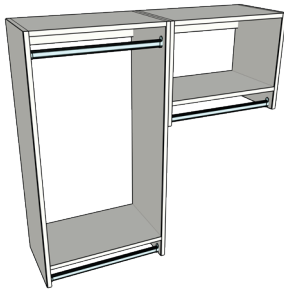
TYPICAL 2 SECTION SELECT

24 - 72" wide two section kit with tall shelving and hanging space



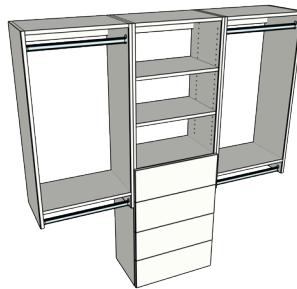
TYPICAL 2 SECTION SPLIT

24 - 72" wide two section kit with split shelving and hanging space



TYPICAL 2 SECTION VALUE

24 - 72" wide two section kit with lots of hanging space



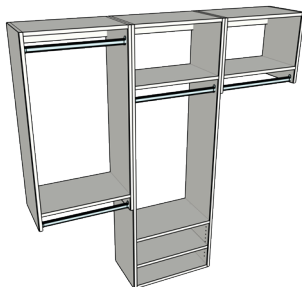
TYPICAL 3 SECTION CHOICE

36 - 108" wide three section kit with drawers, shelving and hanging space



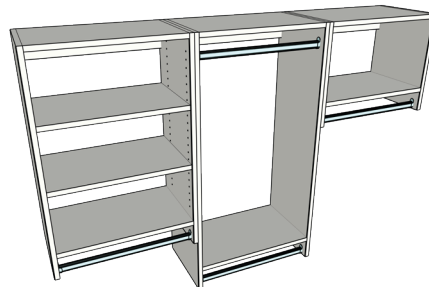
TYPICAL 3 SECTION SELECT

36 - 108" wide three section kit with tall shelving and two hanging spaces



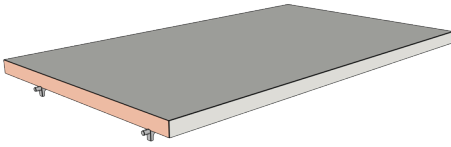
TYPICAL 3 SECTION SPLIT

36 - 108" wide three section kit with split shelving and hanging space



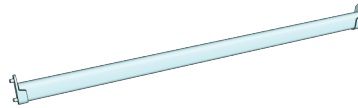
TYPICAL 3 SECTION VALUE

36 - 108" wide three section kit with shelving and lots of hanging space



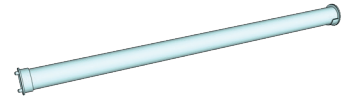
ADJUSTABLE SHELF

Single shelf with variable width and depth



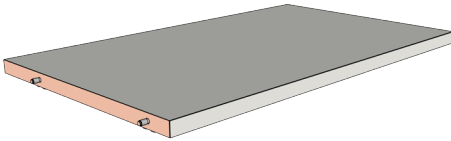
OVAL CLOSET ROD

Closet Rod, oval, with cups



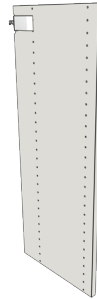
ROUND CLOSET ROD

Closet Rod, round, with cups



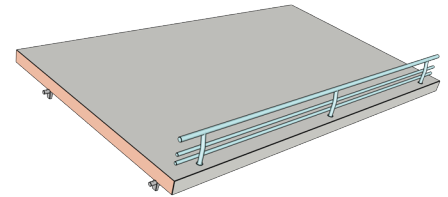
LOCKING SHELF

Single shelf with variable width and depth, drilled for side locking hardware (included), works with Partitions



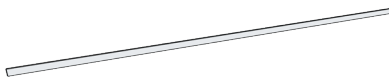
PARTITION

A single vertical panel, drilled left, right or both, with variable height and depth



SHOE SHELF

Single shelf with shoe rail, variable width and depth



WALL RAILS

steel hanging rail 93" long

Important Notice to Catalog Holders

This catalog is copyrighted and intended solely to facilitate doing business with **CabParts®**. It may be freely distributed or reproduced, so long as all references and labeling remain intact and unaltered and **CabParts®** is given full credit in any materials distributed or reproduced in whole or in part.

It is not to be used for commercial purposes by any other business or personal entity.

The technical data presented in regard to dimensions, drawings, suggested assembly techniques, etc., are non-binding and subject to change at any time. **CabParts®** reserves the right to make design changes and improvements and to change specifications and/or prices without notice.

CabParts® does not accept any responsibility for any typographical or other error which may occur in the production of this catalog.



Your Custom Cabinet Factory

Contact CabParts®

716 Arrowest Road
Grand Junction, CO 81505
970.241.7682
cabparts@cabparts.com