



# CabParts

Your Custom Cabinet Factory



2025-A CATALOG



3	INTRODUCTION
4	TERMS & CONDITIONS
5	GENERAL INFORMATION
6	STOCK CASE MATERIAL
7	WALL CABINETS
10	BASE CABINETS
17	VANITY CABINETS
20	DESK CABINETS
22	TALL CABINETS
27	FILLERS & PANELS
30	DOORS AND DRAWER FRONTS
36	DRAWERS AND ROLLOUTS

Contact CabParts®

716 Arrowest Road  
Grand Junction, CO 81505  
970.241.7682  
[cabparts@cabparts.com](mailto:cabparts@cabparts.com)

Since 1987, CabParts® has been proudly serving building trade customers - including cabinet shops, residential and commercial builders and remodelers, architects, designers, and other cabinet related manufacturers. CabParts® is a second-generation family-owned business located in Grand Junction, Colorado.

CabParts® manufactures full-access, European style, cabinet boxes - together with drawers, doors, drawer fronts and closet systems - all to your specifications. All components are shipped flat-packed and arrive with each piece clearly labeled and ready for quick and efficient assembly.

We can also supply functional hardware, dovetailed drawer boxes and wood 5-piece doors and drawer fronts.

To become a CabParts customer and/or place your first order, please go to [\*\*https://cabparts.com/online\*\*](https://cabparts.com/online)



**DIMENSIONS TO FIT YOUR SPECIFICATIONS** - Custom or standard sizing, components are built for each order and delivered ready for quick & easy assembly.



**FLEXIBLE TO YOUR DESIGN** - All components are configured to your specific requirements. Standard item or custom design? 32mm or custom boring patterns? Whatever specifications you need, we can provide.



**RESIDENTIAL OR COMMERCIAL** - Exceed your customer's expectations with casework that is at home in any building, wherever you need them – from homes to hospitals to schools to offices; whether new, remodel, or repair.



**GREAT FREIGHT RATES** - We are proud to call Grand Junction Colorado home, and if that sounds far away that's because it probably is. Because of our semi-remote location, we have a lot of shipping to us but not a whole lot of shipping out. This is great for our customers because we get low freight rates allowing you to keep your costs down.



# Terms and Conditions

Please note, you must be a building trade-related professional to order from CabParts®.

Verification of your trade relation, business and tax status will be required in order to establish a new account with us. We sell wholesale, not retail, business-to-business. If you are a homeowner, please have your building trade professional contact us to arrange purchasing through CabParts®.

## ORDERS AND QUOTES

- Orders will be placed in line for production upon receipt of your Order Confirmation and an initial 50% or complete payment.
- CabParts® makes every reasonable effort to ship on, or before, the projected ship date shown in your Order Confirmation. However, the actual date may vary.
- Quotes do not receive a projected ship date and are not entered into production. Quotes are valid for only 30 days from the date of submittal.
- CabParts® cannot take phone orders.

## PAYMENT

- CabParts® requires a minimum 50% deposit due at approval for production. Any balance is due prior to shipping. CabParts® encourages payment of 100% at time of approval to avoid shipping delays.
- Payment may be made by company check, cashier's check, or credit/debit card through our Merchant One payment portal. We accept Visa, MasterCard, Discover, and American Express.
- Delay of the deposit will affect production timing and may affect shipping date.

## RETURNS

- Authorization must be obtained from CabParts® within 10 business days of delivery. for the return of any CabParts® product, including hardware.
- Any parts made to order or made with special order material are not returnable unless defective.
- All returns, unless for defects, are subject to a restock fee and the customer must pay return shipping costs

## SHIPPING

- Orders are shipped freight pre-paid via common carrier, ground package or may be "Will Call" at the factory. Customers may arrange their own shipping, or request "Freight Charges COD."
- Hard siding of pallets, for increased protection, is available for an additional charge and additional pallets, if requested by the customer, will be assessed a fee-per pallet.
- A Packaging & Handling Fee may be charged based on unusual packaging - for example, a small Order required to go LTL (on a pallet) vs. ground package. Freight companies may add charges for shipping tubes or pallets 93" or longer.
- All Orders are F.O.B. Grand Junction, Colorado.

## WARRANTY

- CabParts® warrants the components it manufactures to be free from defects in material and workmanship, to be machined to correct size and with the correct milling to accomplish easy and accurate assembly. CabParts® makes no further warranty either expressed or implied.
- Since assembly and installation are not done by CabParts® and are beyond our control, CabParts® makes no warranties in regard to assembly or installation.

## DISCLAIMER

- CabParts® will not be responsible for any expenses incurred by the customer due to unexpected delays in factory production, delivery, jobsite installation, assembly time due to incorrect parts or delay for replacement (warranty) parts, freight damage replacement parts, natural or manmade disaster or any other situation not listed here.
- CabParts® reserves the right to change pricing and/or specifications at any time.



# General Information for Cabinets

**CABINET BOXES** are Made-To-Order (MTO) and the customer specifies the cabinet box type and configuration, including dimensions, case materials and edging, hardware, and drilling.

**MATERIALS STOCKED** by CabParts® include white, almond, gray, black and natural maple thermally fused laminates (TFL); pre-finished maple plywood, paint-grade maple veneer on MDF, white veneer core plywood and raw unfaced MDF.

Numerous other materials can be ordered as well – see the Cabinet Material Selections section for examples.

**CASE ASSEMBLY:** Choose your preferred method of Conformat screws (standard, with alignment dowels inserted) or dowel and glue (dowels factory inserted).

Dowel and glue will be applied automatically for exposed finished sides/ends on otherwise Conformat boxes.

**CASE EDGEBANDING:** CabParts® will apply .5mm-3mm thick PVC or ABS, laser/hot air ABS (no glue line), wood veneer, 3mm solid wood, plastic laminate edgebanding, or no edgebanding at all – your choice.

**DOORS AND DRAWER FRONTS** can be supplied by CabParts®, sized to fit your specific order, and made with any currently available panel material and edgebanding.

CabParts® can also provide unfinished wood five-piece door and drawer fronts in a number of wood species.

Many other door types and styles can be outsourced from a variety of high-quality manufacturers.

For **BUYOUT DOORS AND DRAWER FRONTS** CabParts® will supply a listing of suggested sizes (may not currently be available)

**DRAWER BOXES** are sized to fit the cabinet box and the guide hardware chosen in your order.

Standard drawer boxes are cut from CabParts® stock 5/8" thick melamine, with 1/4" thick bottoms. Other options, including dovetailed solid wood, dovetailed plywood and Blum Legrabox are available for your order as well. Dovetailed drawer boxes wider than 34" will have a center bottom rail added for support.

**DRAWER ASSEMBLY** is your choice of Conformat steel screw with guide dowels or standard dowel and glue. Both include factory preinserted dowels.

## **DRAWER EDGEBANDING:**

**Melamine** drawer boxes will be edged with .5mm thick PVC to match the drawer box material.

**Wood** veneer (plywood or MDF core) drawer boxes will have matching .5mm thick wood veneer edging applied.

**Baltic Birch** type plywood drawer boxes will be left unedged as the standard.

**HARDWARE:** CabParts® order options include functional hardware from manufacturers such as Blum and Hafele.

If you select from CabParts® stock hardware, we guarantee it will fit and function in your CabParts® cabinet.

All hardware is subject to availability.

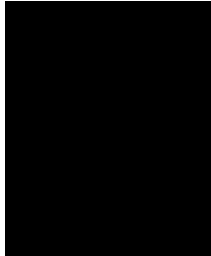
**CABPARTS® IS NOT A RETAILER - WE SELL TO QUALIFIED TRADES, WHOLESALE ONLY.**

FOR NON-TRADE SALES PLEASE TALK TO YOUR BUILDING PROFESSIONAL IF YOU WISH TO USE CABPARTS®.

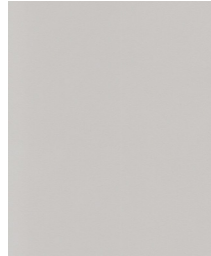
## Stock Case Materials



Almond



Black



Folkstone Grey



Raw MDF



Natural Maple



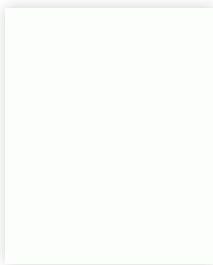
Paintgrade B-1  
Maple Ply



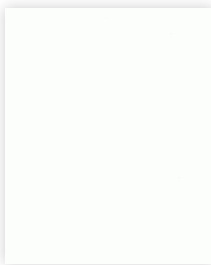
Paintgrade Maple  
B-1 MDF



Prefinished Maple  
C2 Ply



White



White Veneer  
Core Ply



# Wall Cabinets

## GENERAL NOTES AND STANDARDS

---

Standard wall cabinets are 11-3/4" deep

---

CabParts® does NOT recommend single doors greater than 24" wide.

---

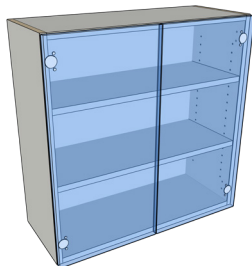
**On wall cabinets, ALWAYS apply a bead of commercial quality construction adhesive or hot melt glue to the junction between the back and cabinet box parts, and/or toenail the back to the case parts in using narrow crown staple or pin nails.**

---

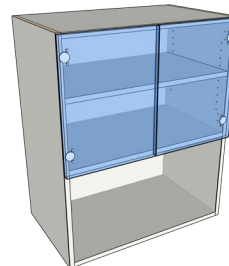
Cabinets, except angled or radius corner cabinets (WA or WRAD), include nailers at top and bottom, in back



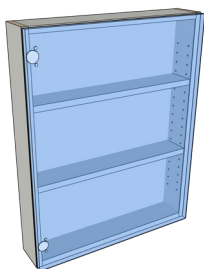
**WALL CABINET UNITS**



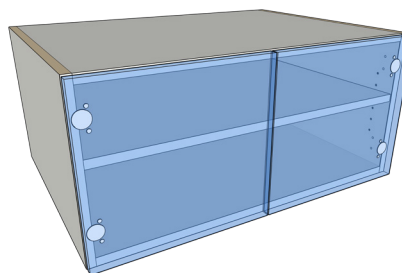
**W**  
Wall Cabinet  
with Door(s)



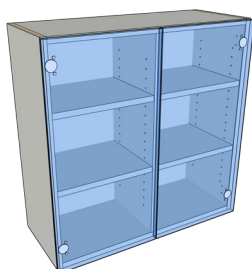
**WM**  
Door(s) over  
Microwave Shelf



**WMC**  
Medicine  
Cabinet



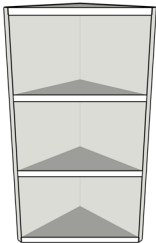
**WR**  
Refrigerator Upper  
23-3/4" deep



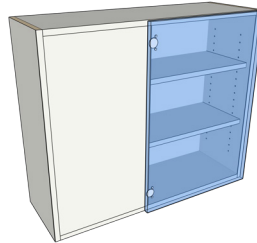
**WVD**  
Wall with Doors  
& Variable Divider



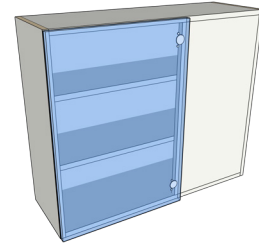
**WALL CORNER UNITS**



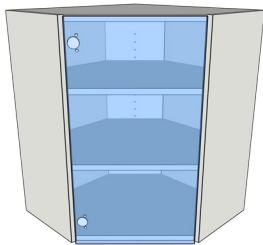
**WA**  
Open Angled End



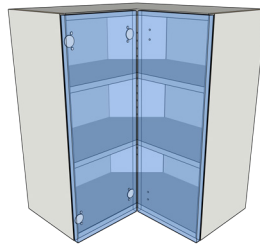
**WBC-L**  
Blind Corner Left



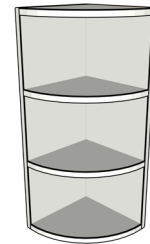
**WBC-R**  
Blind Corner Right



**WDC**  
Diagonal Corner  
Cabinet



**WRAC**  
Right Angle



**WRAD**  
Radius End

# Base Cabinets

## GENERAL NOTES AND STANDARDS

---

Standard base cabinets are 30-1/2" high and 23-3/4" deep

---

Drawer mount drilling will be for the drawer hardware selected

---

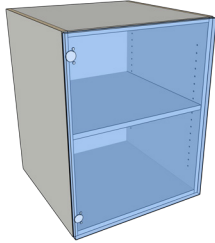
Cabinets, except angled or radius corner cabinets (BA or BRAD) include nailers at top and bottom, in back

---

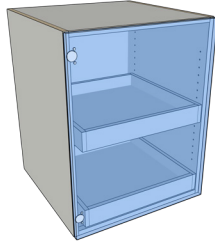
CabParts® does NOT recommend single doors greater than 24" wide



**BASE CABINET UNITS**



**B**  
Base for Door(s)



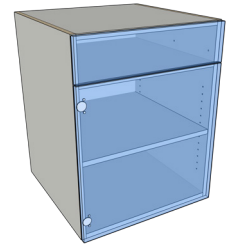
**B-RO**  
Base for Door(s)  
with Rollout(s)



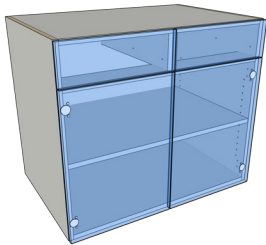
**B1**  
Drawer  
Over Door(s)



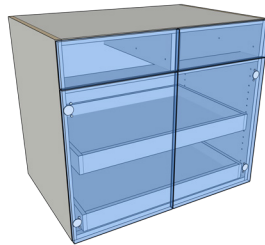
**B1-RO**  
B1 with Rollouts



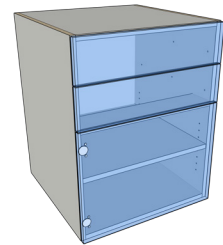
**B1-FX**  
B1 with Fixed  
Shelf



**B2**  
Two Drawers  
over Doors

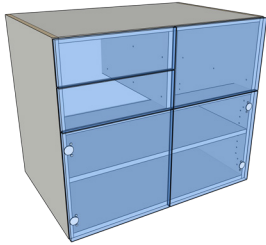


**B2-RO**  
Two Drawers over  
Doors with Rollouts

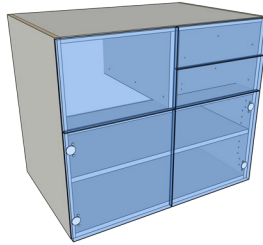


**B2D**  
Stack of Two  
Drawers over Door(s)

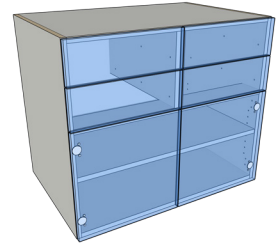
**BASE CABINET UNITS**



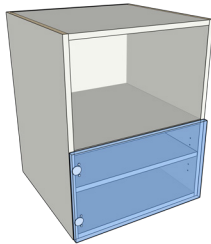
**B3D-L**  
Three Drawers (2 LT)  
over Door(s)



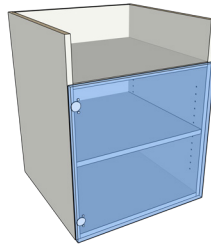
**B3D-R**  
Three Drawers (2 RT)  
over Door(s)



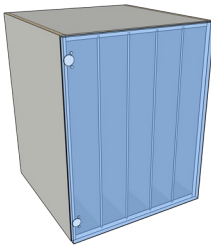
**B4D**  
Four Drawers (2 RT, 2 LT)  
over Door(s)



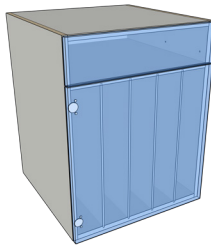
**BFX-Doors**  
Top Opening over Door(s)



**BRC-Doors**  
Range over Door(s)



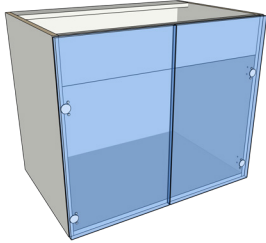
**BT**  
Tray with Tall Door(s)



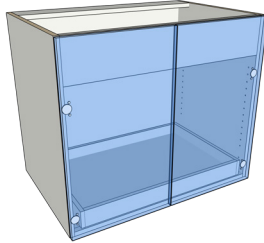
**BT1**  
Tray with Drawer  
over Door(s)



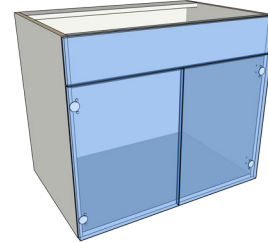
**BASE SINK CABINET UNITS**



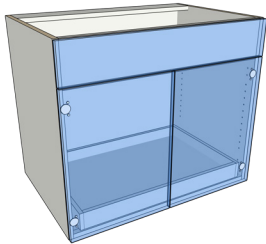
**BS**  
Sink with Tall Door(s)



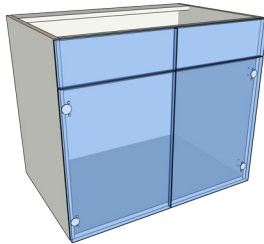
**BS-RO**  
BS with Rollout



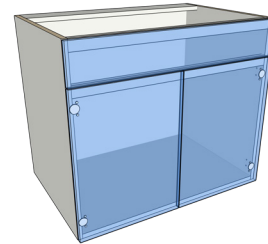
**BS1F**  
Sink, False Front  
over Door(s)



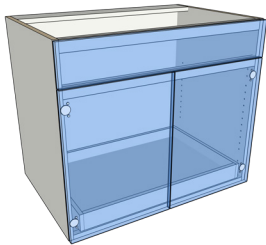
**BS1F-RO**  
BS1F with Rollouts



**BS2F**  
Sink, Two False Fronts  
over Door(s)

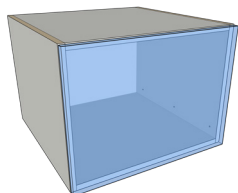


**BSTO**  
Sink with Tilt-Out  
over Door(s)

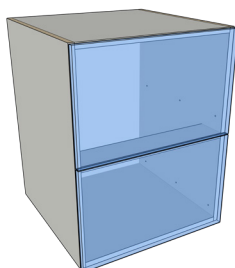


**BSTO-RO**  
BSTO with Rollouts

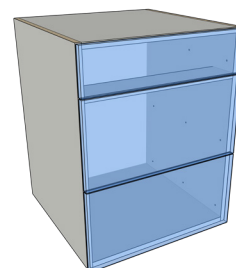
**BASE DRAWER UNITS**



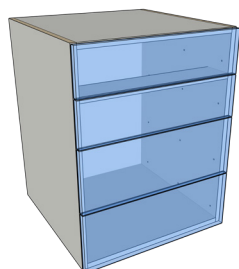
**B-D1**  
Single Drawer



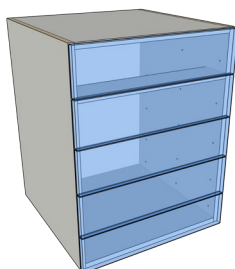
**B-D2**  
Stack of 2 Drawers



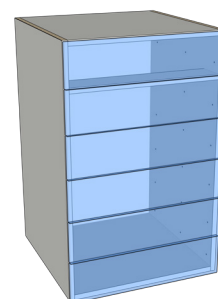
**B-D3**  
Stack of 3 Drawers



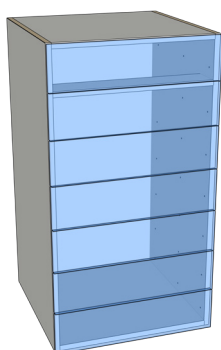
**B-D4**  
Stack of 4 Drawers



**B-D5**  
Stack of 5 Drawers

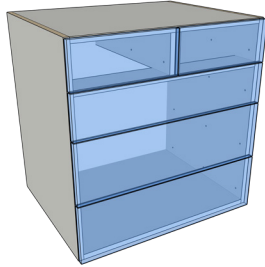


**B-D6**  
Stack of 6 Drawers

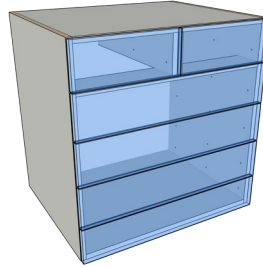


**B-D7**  
Stack of 7 Drawers

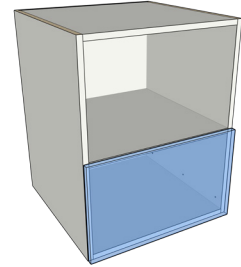
**BASE DRAWER UNITS**



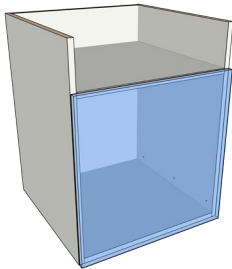
**B2-D3**  
2 Drawers over  
3 Drawers



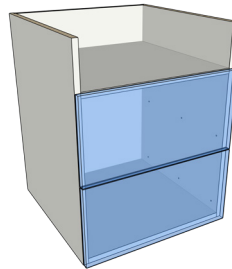
**B2-D4**  
2 Drawers over  
4 Drawers



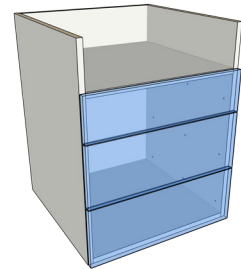
**BFX-D1**  
Top Opening  
over Drawer



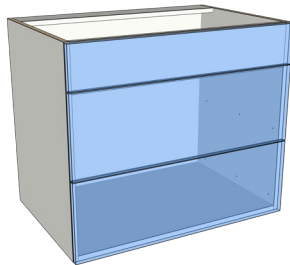
**BRC-D1**  
Range over Drawer



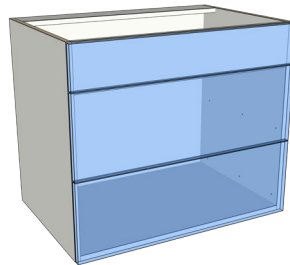
**BRC-D2**  
Range over 2 Drawers



**BRC-D3**  
Range over 3 Drawers



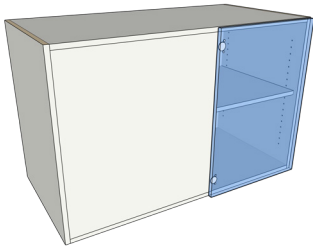
**BS1F-D2**  
Sink with False Drawer  
Front over 2 Drawers



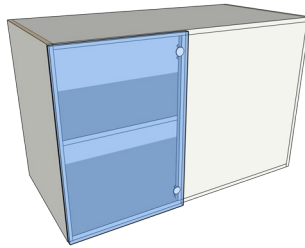
**VS1F-D2**  
Sink with False Drawer  
Front over 2 Drawers



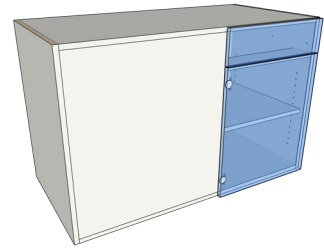
**BASE CORNER UNITS**



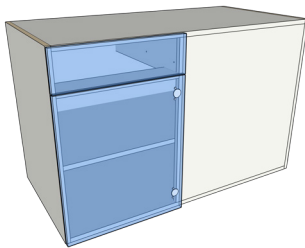
**BBC-L**  
Blind Corner Left



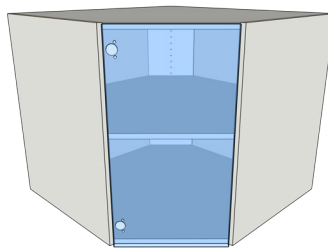
**BBC-R**  
Blind Corner Right



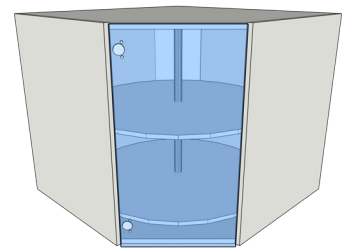
**BBC1-L**  
Blind Corner with  
Drawer Left



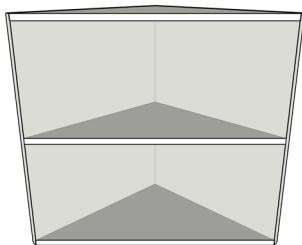
**BBC1-R**  
Blind Corner with  
Drawer Right



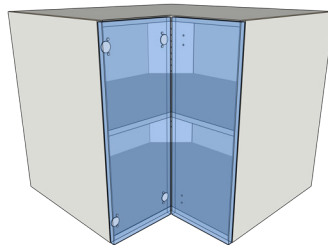
**BDC**  
Diagonal



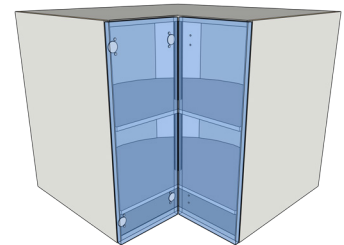
**BDC-LS**  
Diagonal with  
Lazy Susan



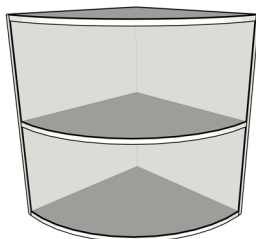
**BA**  
Open Angle



**BRAC**  
Right Angle



**BRAC-LS**  
Right Angle with  
Lazy Susan



**BRAD**  
Open Radius

# Vanity Cabinets

## GENERAL NOTES AND STANDARDS

Standard vanity box is 26-1/2" high and 20-3/4" deep

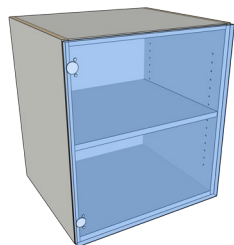
Drawer mount drilling will be for the drawer hardware selected

Cabinets include nailers at top and bottom, in back

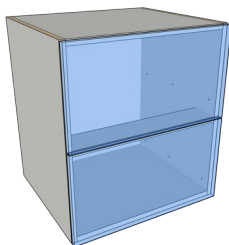
CabParts® does NOT recommend single doors greater than 24" wide



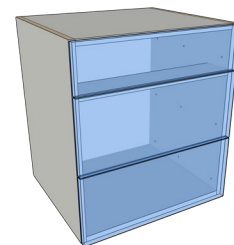
**VANITY CABINET UNITS**



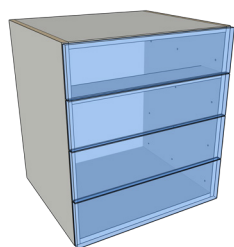
**VB**  
Door(s)



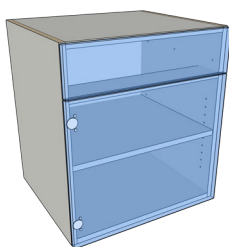
**VB-D2**  
Stack of 2 Drawers



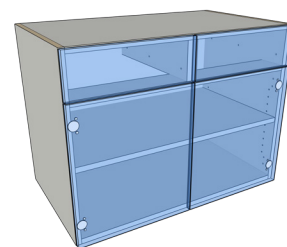
**VB-D3**  
Stack of 3 Drawers



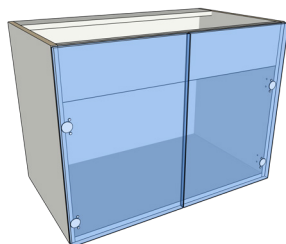
**VB-D4**  
Stack of 4 Drawers



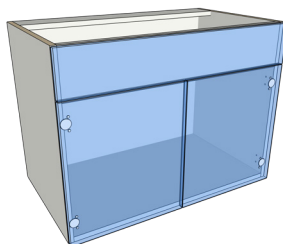
**VB1**  
Drawer over Door(s)



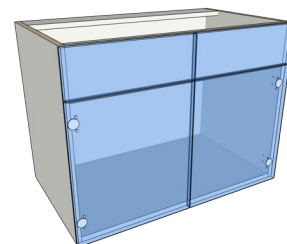
**VB2**  
2 Drawers over 2 Door(s)



**VS**  
Sink with Full-Height  
Door(s)



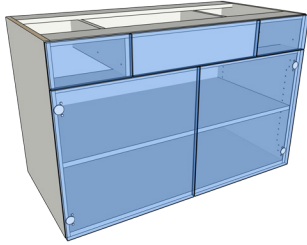
**VS1F**  
Sink, False Front  
over Door(s)



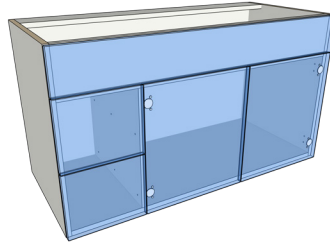
**VS2F**  
Sink, 2 False Fronts  
over Door(s)



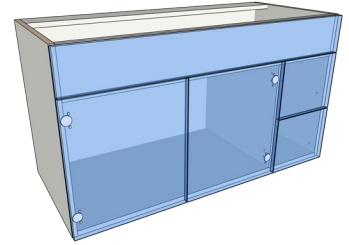
VANITY CABINET UNITS



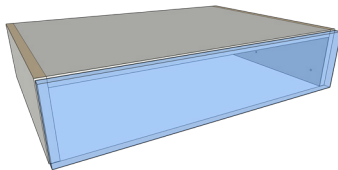
VSDA  
Drawers, False Front,  
and Door(s)



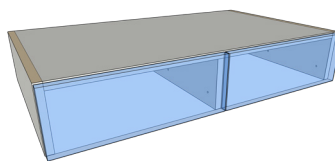
VSD-B-L  
False Front, Drawers (LT)  
and Door(s) (RT)



VSD-B-R  
False Front, Drawers (RT)  
and Door(s) (LT)



VPD1  
Pencil 1 Drawer



VPD2  
Pencil 2 Drawers

# Desk Cabinets

## GENERAL NOTES AND STANDARDS

---

Standard desk cabinets are 24 1/2" high and 20 3/4" deep

---

Drawer mount drilling will be for the drawer hardware selected

---

Cabinets include inset nailers at top and bottom, in back

---

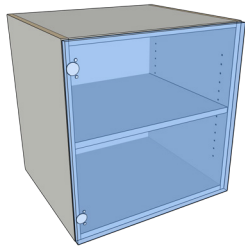
CabParts® does NOT recommend single doors greater than 24" wide

---

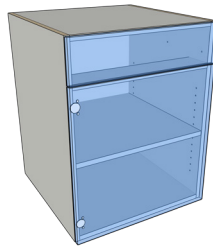
Desk top drawer front height default is 6-1/8" unless overridden by the "Top Drawer Front Height" preset.



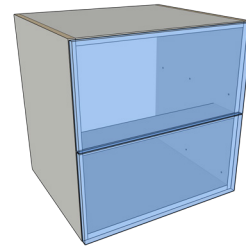
DESK CABINET UNITS



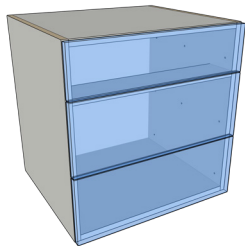
DB  
Door(s)



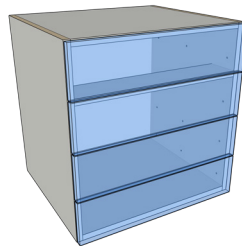
DB1  
Drawer over Door(s)



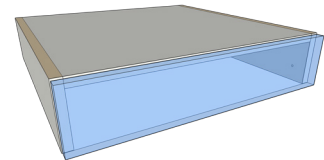
DB-D2  
Stack of 2 Drawers



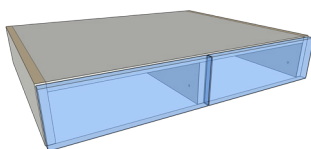
DB-D3  
Stack of 3 Drawers



DB-D4  
Stack of 4 Drawers



DPD1  
Pencil 1 Drawer



DPD2  
Pencil 2 Drawers



# Tall Cabinets

## GENERAL NOTES AND STANDARDS

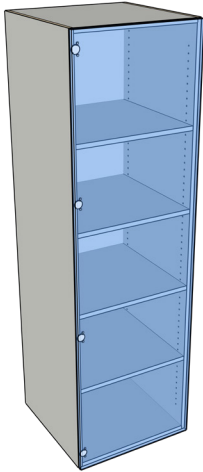
Standard tall cabinet are 80" high and 23-3/4" deep

Drawer mount drilling will be for the drawer hardware selected

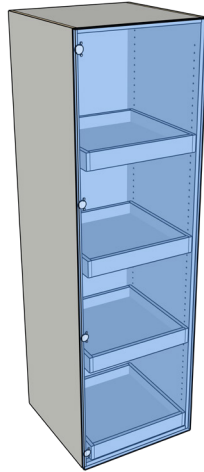
Cabinets include 3 nailers for use at top, bottom, and behind fixed shelves, in back.

CabParts® does NOT recommend single doors greater than 24" wide

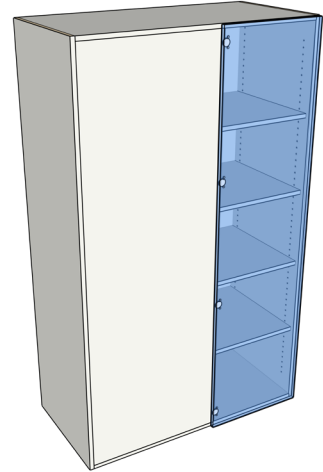
**TALL CABINET UNITS**



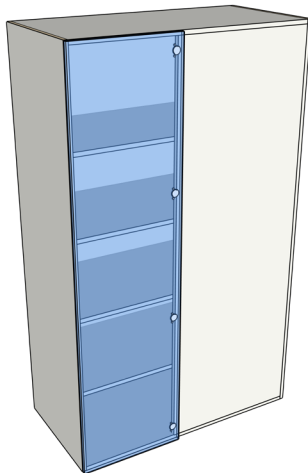
**T**  
Tall, No Fixed Shelf



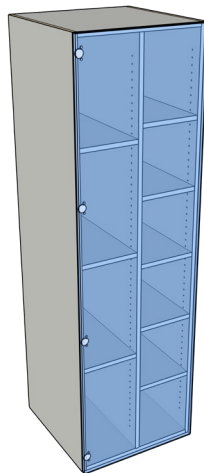
**T-RO**  
T with Rollouts



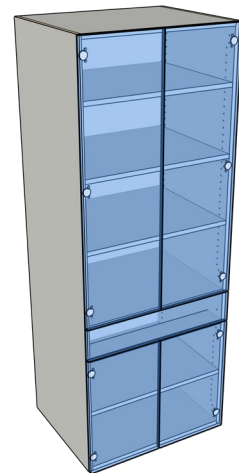
**TBC-L**  
Blind Corner Left



**TBC-R**  
Blind Corner Right

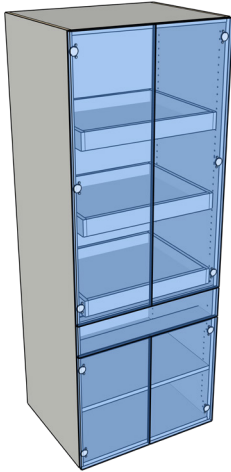


**TVD**  
Tall, with Adjustable  
Divider

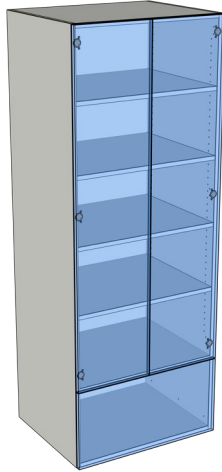


**TD-B1**  
Door(s), Drawer, Door(s)

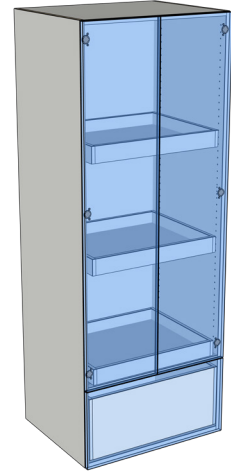
**TALL CABINET UNITS**



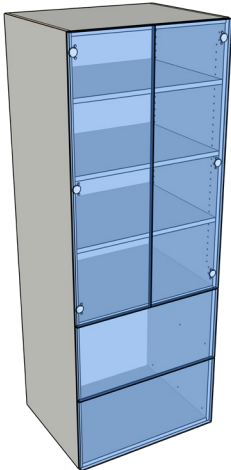
TD-B1-RO  
TD-D1 with Rollouts



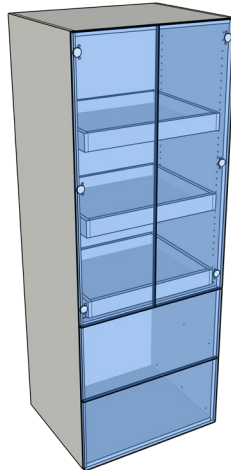
TD-D1  
Door(s) over 1 Drawer



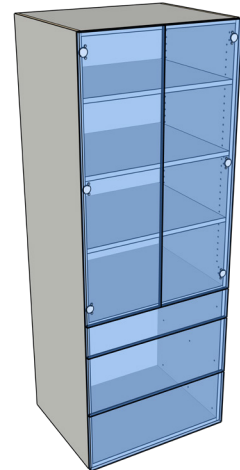
TD-D1-RO  
TD-D1 with Rollouts



TD-D2  
Door(s) over 2 Drawers



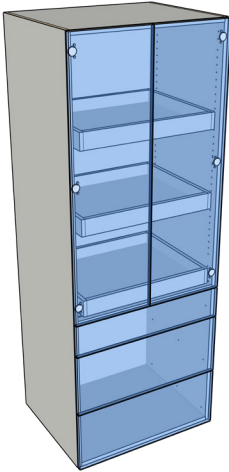
TD-D2-RO  
TD-D2 with Rollouts



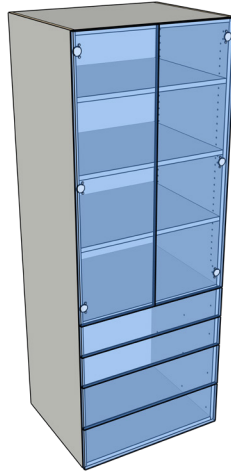
TD-D3  
Door(s) over 3 Drawers



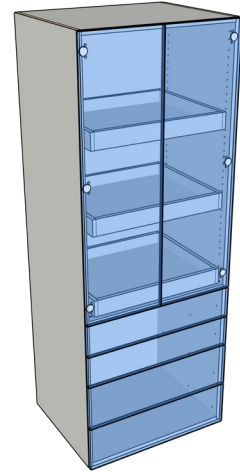
**TALL CABINET UNITS**



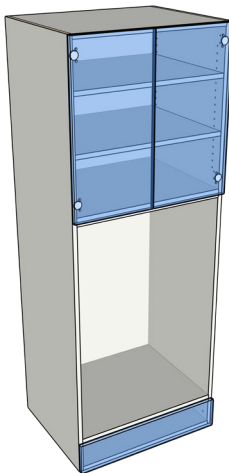
TD-D3-RO  
TD-D3 with Rollouts



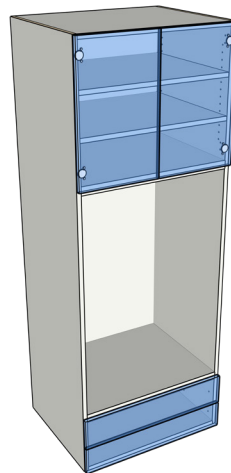
TD-D4  
Door(s) over 4 Drawers



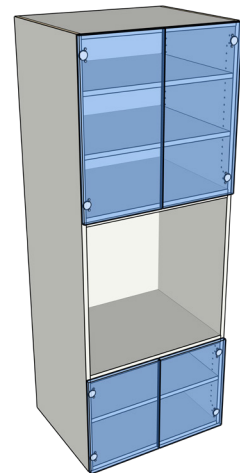
TD-D4-RO  
TD-D4 with Rollouts



TO-D1  
Oven over 1 Drawer

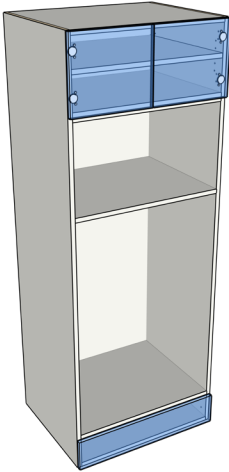


TO-D2  
Oven over 2 Drawers

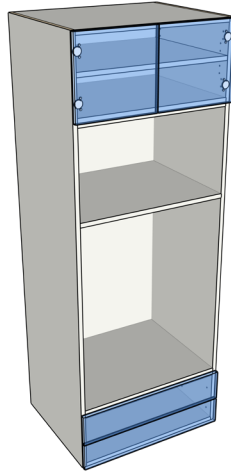


TO-DOORS  
Oven over Doors

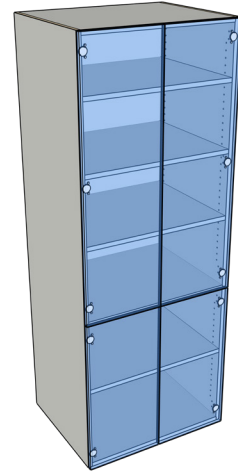
**TALL CABINET UNITS**



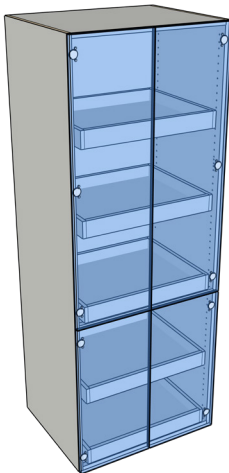
**TOM-D1**  
MW Oven over 1 Drawer



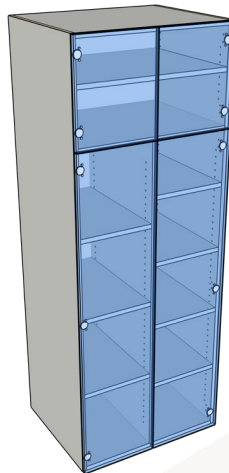
**TOM-D2**  
MW Oven over 2 Drawers



**TS-TU**  
Tall Storage  
or Utility



**TS-TU-RO**  
TS-TU with Rollouts



**TSVD**  
Tall Storage with  
Variable Divider

# Fillers

## GENERAL NOTES AND STANDARDS

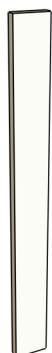
- Material may be any available panel material
- Edged per customer requirements
- Sized per customer requirements

# Panels, Cut to Size

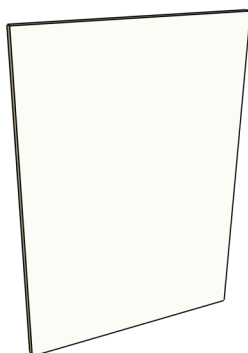
## GENERAL NOTES AND STANDARDS

- Material may be any available panel material
- Edged per customer requirements
- Cut to size per customer specification

**FILLERS**



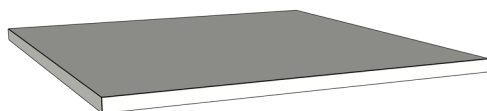
FILLER  
Straight Filler



FINISHED PANEL /  
TOE KICK PANEL  
Panel with Finished End



WALL FILLER  
Filler with Bottom Return



ADJUSTABLE SHELF

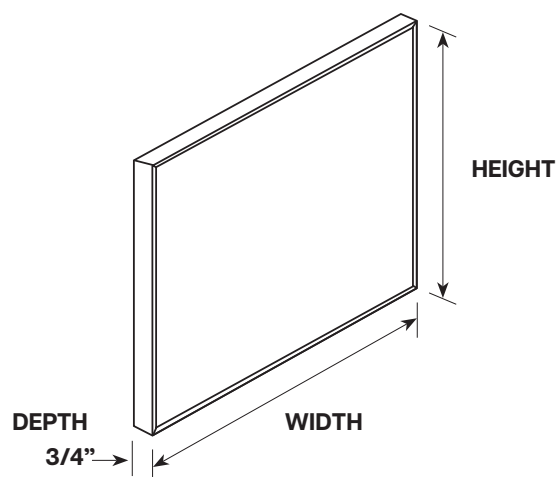
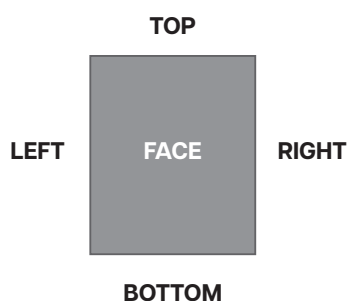


LEGRABOX FRONT PIECE



## PANELS, CUT TO SIZE

- **Cut to size panels** may be ordered from any stocked CabParts® sheet goods, or from special ordered materials. Customer must specify panel size by width and height.
- Minimum **width** 3" – minimum **height** is 10"
- If edgebanded, customer must specify edges to be banded and the edgeband selected:



# Doors & Drawer Fronts

## GENERAL NOTES AND STANDARDS

---

Customer chooses panel material, finish, and edgeband treatment

---

CabParts® offers many options for Doors & Drawer Fronts, see chart on following pages

---

CabParts® provides a complimentary Door & Drawer Front size list for each order (may not be currently available)

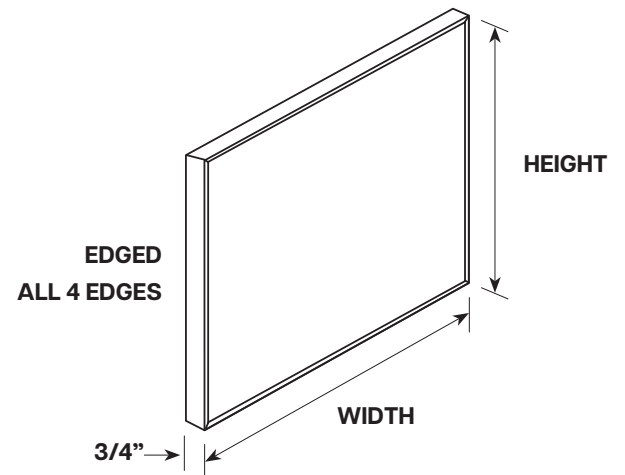
---

All doors may be drilled for Euro style hinges, for example: Blum brand

---

Drawer Fronts may be milled for MetaBox, TandemBox, LegraBox, Moovit, etc

---



# CabParts® Door & Drawer Front Choices

DOOR & DRAWER FRONT MATERIAL	.5 PVC/ABS	1.2mm No Glue	3mm PVC	.5mm Wood Veneer	3mm Solid Wood	Plastic Laminate	5-Piece Fronts
CabParts® Stocked Melamines	\$	\$\$\$	\$	\$	\$\$\$	\$\$\$	
Non-Stocked Melamines	\$\$-\$\$\$	\$\$\$-\$\$\$\$	\$\$\$	\$-\$\$\$	\$\$\$-\$\$\$\$	\$\$\$-\$\$\$\$	
MDF Veneered or Raw	\$\$		\$\$\$	\$\$	\$\$\$	\$\$\$\$	
Veneer on Plywood	\$\$\$		\$\$\$	\$\$\$	\$\$\$		
Pre-Finished Veneer on Plywood	\$\$		\$\$\$	\$\$	\$\$\$		
High Gloss Acrylic		\$\$\$\$			\$\$\$		
Ultra Matte Acrylic		\$\$\$\$			\$\$\$\$		
Plastic Laminate, Laid Up, G2S	\$\$\$	\$\$\$\$	\$\$\$\$		\$\$\$\$	\$\$\$\$	
5-Piece Unfinished Wood (see Order Form)							\$\$
5-Piece Finished Wood							\$\$\$\$

## MELAMINE

### CabParts® Stock

- White
- Almond
- Gray
- Black
- Natural Maple

### Melamine Sources

- Roucke
- Cleaf
- Salt
- Stevens
- Egger

Some products may not be available in small quantities; check with CabParts®.

## MDF/PLYWOOD

### CabParts® Stock

- C2 Maple ply, prefinished
- B1 Maple, MDF unfinished
- Raw MDF

### Additional MDF/ Plywood Materials

- CabParts® can source nearly any veneer, in any grade, unfinished on MDF or Plywood core to fit your needs. Limited availability of prefinished veneers.
- Check with CabParts® for your requirements.

## ACRYLIC

- High Gloss, one face or two
- Matte Finish, one face or two
- Check with CabParts® for color, finish, and edgeband choices

## 5-PIECE UNFINISHED WOOD

- See Order Form for design choices
- 13 basic wood species available
- Fronts provided unfinished
- All fronts are sized specific to your order or to your specified sizes

## Wood Doors & Drawer Fronts

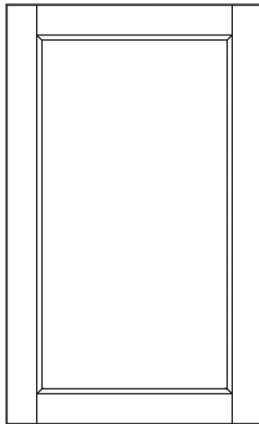
CabParts® is pleased to make available, in addition to our flat panel laminate and melamine offerings, a selection of **unfinished** wood doors and drawer fronts in various species and styles.

We can help you reduce your time per job, produce more, and sell more, all while maintaining your standards for high quality.

- Each unit is cut to size, sanded and inspected one at a time, ensuring that you receive products you will be proud to use in your jobs.
- All stile and rail joints are glued and doweled – not just pinned – for extra quality and strength.
- All solid wood panels are allowed to “float” within the frame with clearance on all sides to allow for expansion and contraction caused by changes of temperature and/or humidity.
- Arches are geometrically designed to maintain uniform style regardless of widths.
- Sizes can be in inches or millimeters. We will cut to the nearest 1/32” or whole millimeter and sizes are guaranteed to within +/- 1/32” of the given measurements.
- Standard thickness is 13/16”.
- CabParts® guarantees material and workmanship for one year from date of shipment. This guarantee is voided by improper storage, handling, or finishing on the part of the customer or final consumer.
- Warpage is guaranteed to 3/16”, however cabinet doors over 24 inches wide or 44 inches tall are not guaranteed against warpage. Warp is any distortion of the door itself on width, length or diagonal and is measured by placing a straight edge on the concave face and determining the maximum distance from straight edge to door face. Warp does not refer to the relationship of the door to the face frame or cabinet box.
- The warranty covers replacement or repair of doors or drawer fronts in an unfinished state and in good condition as originally delivered F.O.B. our factory. Our liability will be limited to the net invoice price of the defective items, and CabParts® cannot be responsible for any other damages or loss of profits.
- Changes or cancellations after order approval may incur additional charges.
- Pricing is to the actual square footage, with a minimum door or drawer front charge of two square feet per piece. Inside and outside profiles are included.
- Doors over 48” tall or 24” wide will have a center rail or stile included and will incur an upcharge. If placing that rail or stile at other than the center (standard), the location must be specifically and clearly noted in the order.
- Glass door frames are rabbeted to receive the glass. Glass and stop are not provided, but rubber stop is optional – specify glass thickness.
- Paint grade is mill choice, with MDF panels (plywood optional).
- Available species:
  - Alder (clear or rustic)
  - Cherry
  - Hickory (heart, rustic heart, calico)
  - Maple
  - Oak, red
  - Oak, white
  - Pine (knotty)
  - Walnut (clear or rustic)
  - Paint Grade / MDF or plywood panel



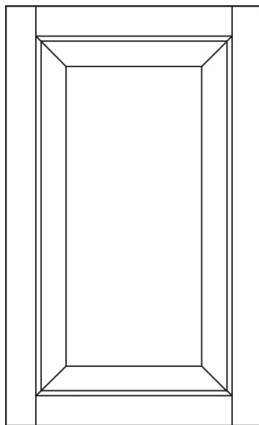
WOOD DOOR STYLES



**SFP**

**Flat Inset Panel Doors**

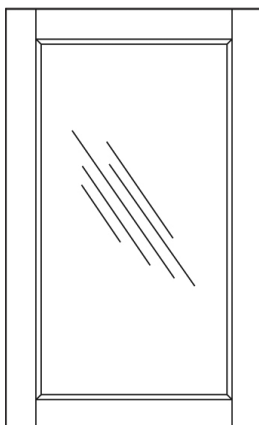
1/4" panel (plywood or MDF)



**SRP**

**Raised Panel Doors**

Back-cut raised panel available  
(PR-6)



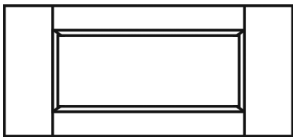
**SGP**

**Glass Frame Doors**

Rubber stop optional,  
specify thickness of your glass  
(not included)

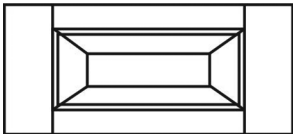
**For all doors, a middle rail  
or stile is optional; specify  
location if different from  
standard (centered)**

WOOD DRAWER FRONT STYLES



SFP-DF

Flat Panel Drawer Front



SRP-DF

Raised Panel Drawer Front



SLAB-DF

Slab Drawer Front

**NOTE**

The minimum height is 4" for SFP-DF and 6-1/8" for SRP-DF drawer fronts.

Standard Panel drawer front top and bottom standard rails are 1-1/4" high.

EDGE PROFILES

Outside Edge



E-1 1/8" RADIUS



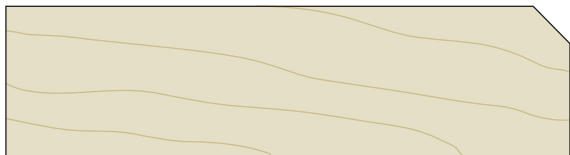
E-4 1/4" RADIUS



E-2 SQUARE



E-5



E-3



E-6

EDGE & PANEL PROFILES

**Inside**

ALL ARE 2 1/4" WIDE UNLESS OTHERWISE NOTED



**W** (2 3/8")



**T**



**S**

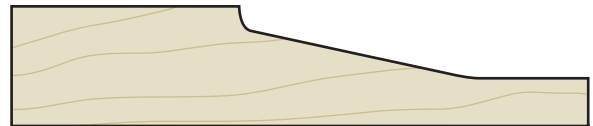


**O**



**B**

**Raised Panel**



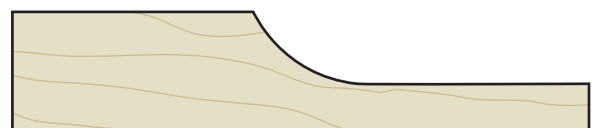
**PR-1**



**PR-2**



**PR-3**



**PR-4**



**PR-5**

FRONT



BACK

**PR-6** (back cut)

# Drawer Boxes & Rollout Shelves

## GENERAL NOTES AND STANDARDS

Standard material will be 5/8" thick, G2S melamines from CabParts® stock

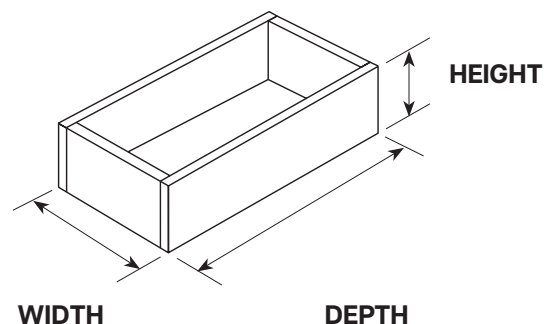
Choose assembly method: Dowel & Glue or Conformat Screw

All dowels will be factory inserted

CabParts® offers many options for Drawer Boxes, see chart on following pages

Rollout Shelves include spacer blocks for door edge and hinge clearance

Customer specifies materials, type of Drawer / Rollout and construction





## CABPARTS® DRAWER BOXES & ROLLOUT SHELVES

MATERIAL	JOINERY					COST SCALE
	Sides & Ends Thickness	Dowel & Glue	Conformat	Dovetailed	Drawer System	
Melamine	5/8"	.	.			\$
Birch Ply	5/8" (16mm)	.	.	.		\$\$
Solid Wood	5/8"			.		\$\$\$
Legra Box					.	\$\$\$

### MELAMINE

#### CabParts® Stock

- White
- Almond
- Gray
- Black
- Natural Maple
- Salt Anthracite Linen
- Salt Buff Linen
- Salt Magnolia Linen

### DOVETAILED

- Maple Hardwood
- Beech Hardwood
- Birch Plywood

### DRAWER SLIDES

- LegraBox
- Tandem
- Blumotion (Soft Close)
- Euro Epoxy 3/4" Extension
- Ball Bearing Pro 100
- Ball Bearing Pro 100 (Soft Close)
- Other systems may be available; check with CabParts®.

• Some products may not be available in small quantities; check with CabParts®.

### NOTE

- CabParts® Drawer Boxes and Rollout Shelves wider than 34-1/8" will receive a 5/8" thick, rabbeted-in bottom for strength, depending on material chosen.
- Dovetail Drawer Boxes wider than 34" will receive a support rail at center, under the bottom.

# Important Notice to Catalog Holders

This catalog is copyrighted and intended solely to facilitate doing business with **CabParts®**. It may be freely distributed or reproduced, so long as all references and labeling remain intact and unaltered and **CabParts®** is given full credit in any materials distributed or reproduced in whole or in part.

It is not to be used for commercial purposes by any other business or personal entity.

The technical data presented in regard to dimensions, drawings, suggested assembly techniques, etc., are non-binding and subject to change at any time. **CabParts®** reserves the right to make design changes and improvements and to change specifications and/or prices without notice.

**CabParts®** does not accept any responsibility for any typographical or other error which may occur in the production of this catalog.



Your Custom Cabinet Factory

**Contact CabParts®**

716 Arrowest Road  
Grand Junction, CO 81505  
970.241.7682  
[cabparts@cabparts.com](mailto:cabparts@cabparts.com)